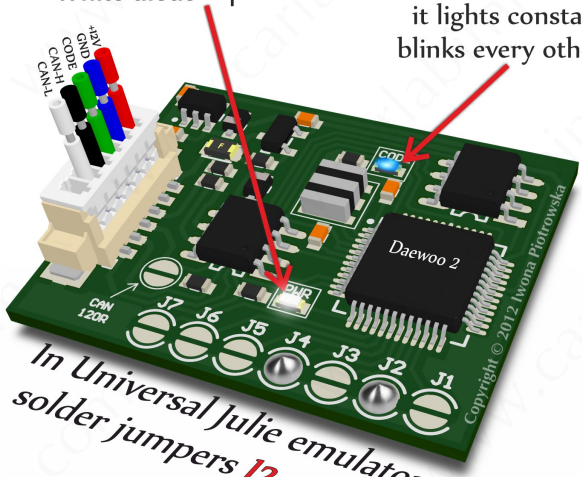




DAEWOO 2 IMMO EMULATOR

White diode – power

Blue diode – after adjusting
it lights constantly and
blinks every other second



*In Universal Julie emulator
solder jumpers **J2 and J4***

This device self-learns ECU code

Use

Matiz SIEMENS ECU

Matiz KEMSCO ECU

Tacuma KEMSCO ECU

Chevrolet Spark D32 ECU 0.8ccm 38kW

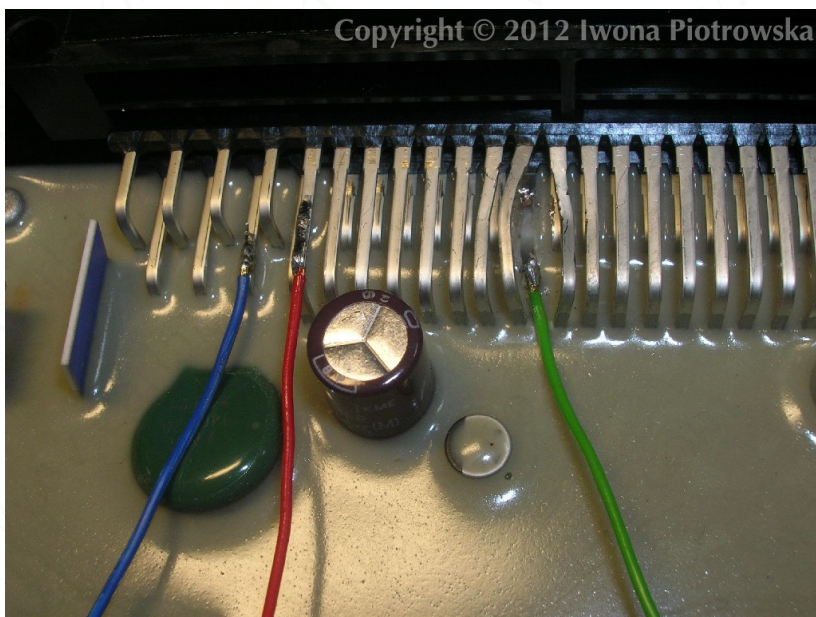
Lanos hybrid ECU 1.4 OHC

Rezzo hybrid ECU 2.0 16V 89kW DOHC

Kalos SIRIUS D42 ECU 1.2

Chevrolet Aveo 4R ECU 1.2 8V

Matiz SIEMENS ECU

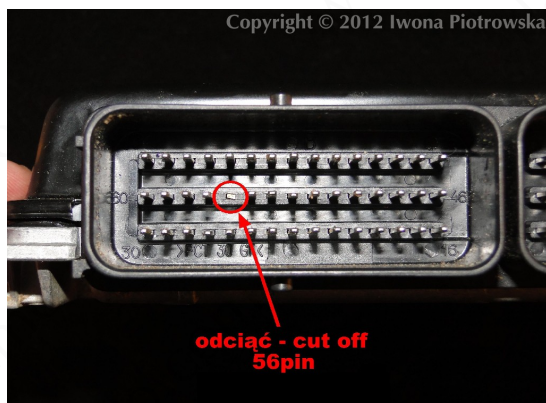
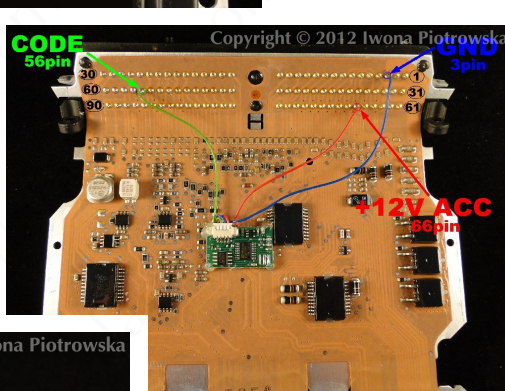
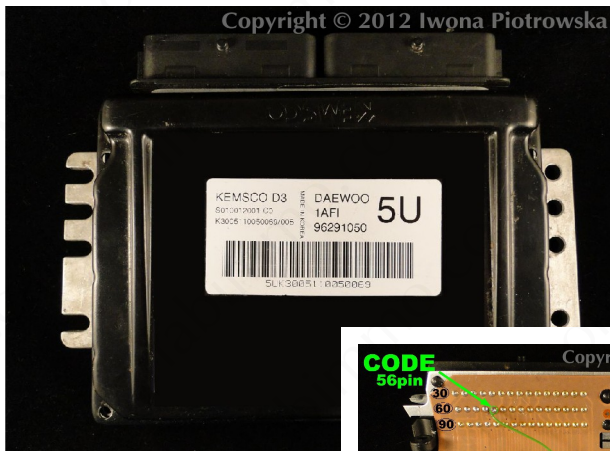


Connecting emulator to ECU

GND pin 3
power pin 32 (or pin 24 ACC)
immo pin 11

Cut off pin 11 from wiring in the car !!!

Matiz KEMSCO ECU

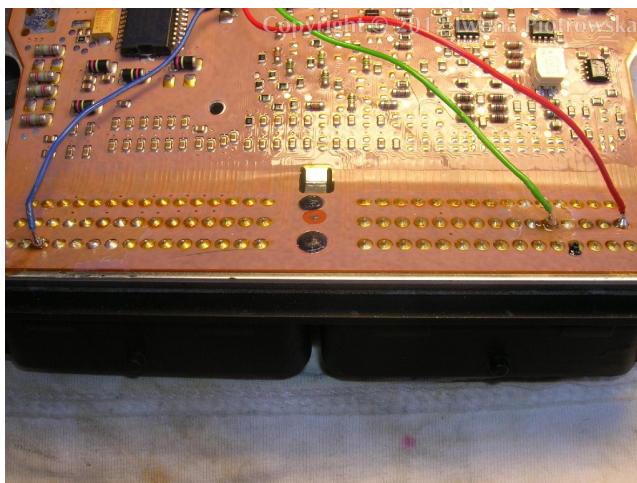


Connecting emulator to ECU

GND	pin 3
power	pin 66
immo	pin 56

Cut off pin 56 from wiring in the car!!!

Tacuma KEMSCO ECU

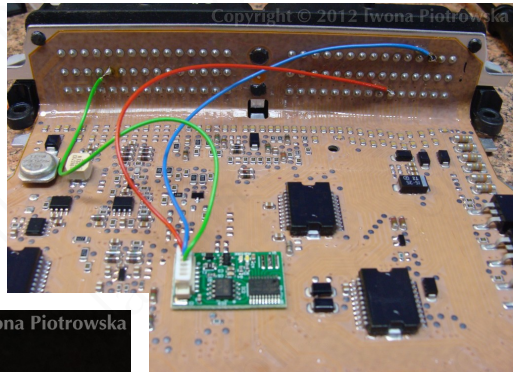


Connecting emulator to ECU

GND	pin 3
power	pin 60
immo	pin 56

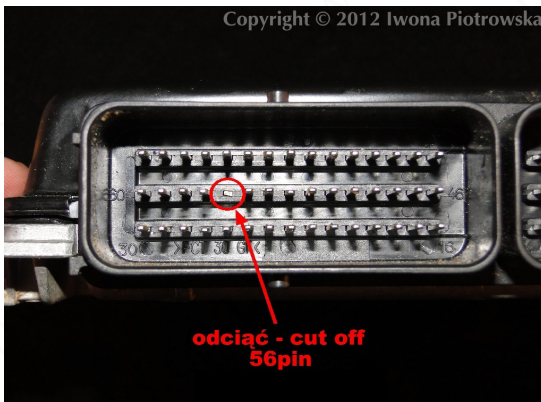
Cut off pin 56 from wiring in the car!!!

Chevrolet Spark D32 ECU 0.8ccm 38kW



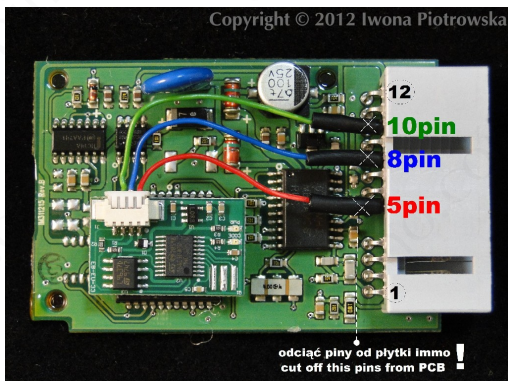
Connecting emulator to ECU

GND	pin 3
power	pin 66
immo	pin 56



Cut off pin 56 from wiring in the car!!!

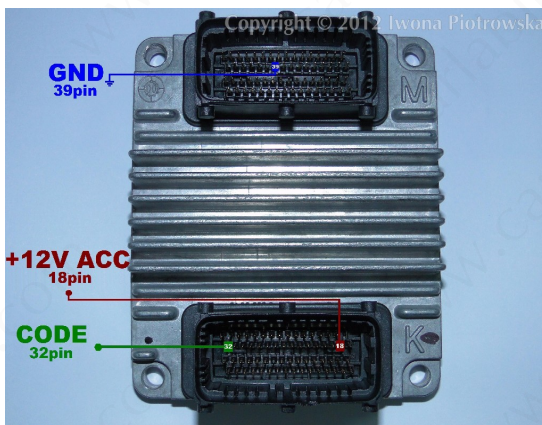
Lanos hybrid ECU 1.4 OHC and Rezzo hybrid ECU 2.0 16V 89kW DOHC



Connect emulator to the socket
of disconnected immobiliser:

GND	pin 8
power	pin 5
imm0	pin 10

Or connect it to ECU socket



GND	39pin (socket - M)
power	18pin (socket - K)
CODE	32pin (socket - K)

Cut off pin 32 from
wiring in the car!!!

Before connecting the emulator, it must be precisely insulated with insulation tape

Kalos SIRIUS D42 ECU 1.2



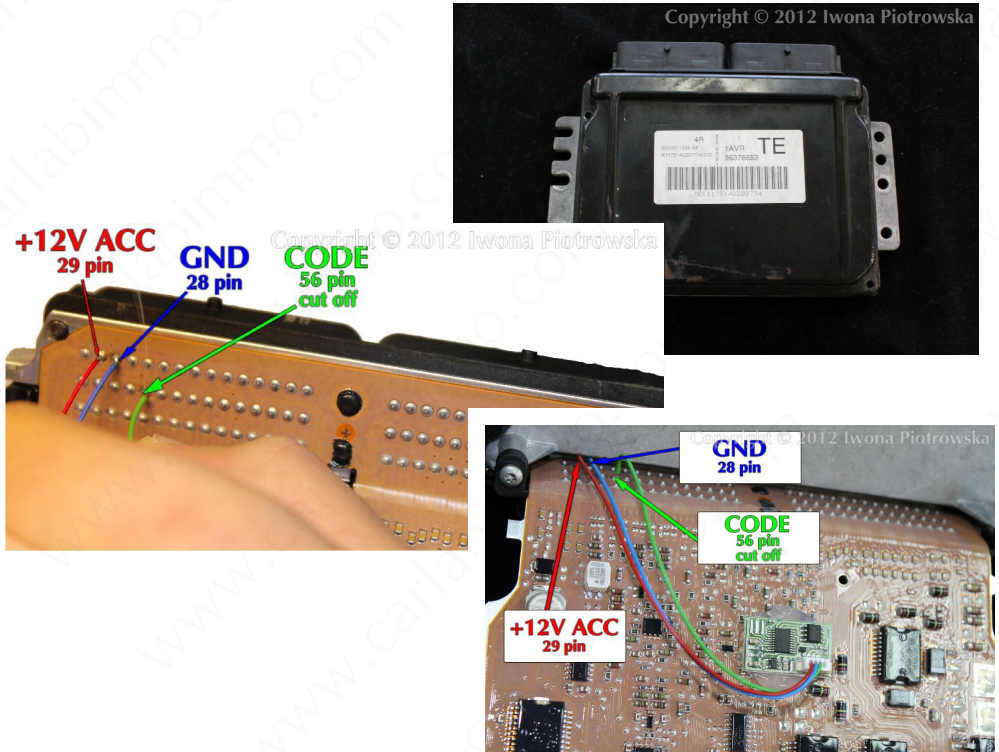
Connecting emulator to ECU

GND	pin 28
power	pin 29
immo	pin 56

Before connecting the emulator, it must be precisely insulated with insulation tape

Cut off pin 56 from wiring in the car!!!

Chevrolet Aveo 4R ECU 1.2 8V



Connecting emulator to ECU

GND	pin 28
power	pin 29
immo	pin 56

Before connecting the emulator, it must be precisely insulated with insulation tape

Cut off pin 56 from wiring in the car!!!

Warning!!!

Due to possible construction changes of cars, check signals with multimeter in the ECU plug.

We state that we are the only authentic authors of this manual. We possess copyright of this publication. All rights reserved. Unauthorized copying, hiring, lending, public performance will be punished!!! Any trials of unauthorized copying, hiring, quoting prohibited!!! Both service and advertisement constitute copyright and they are the subject to the protection in accordance with the Act from 4th Feb. 1994 on Copyright and Related Laws (Statute Book no. 24 position 93) and protection on the basis of the Act from 8th June 1993 on combating an unfair competition (Statute Book no. 47 position 211).

www.carlabimmo.com

Last updated 05.09.2014